

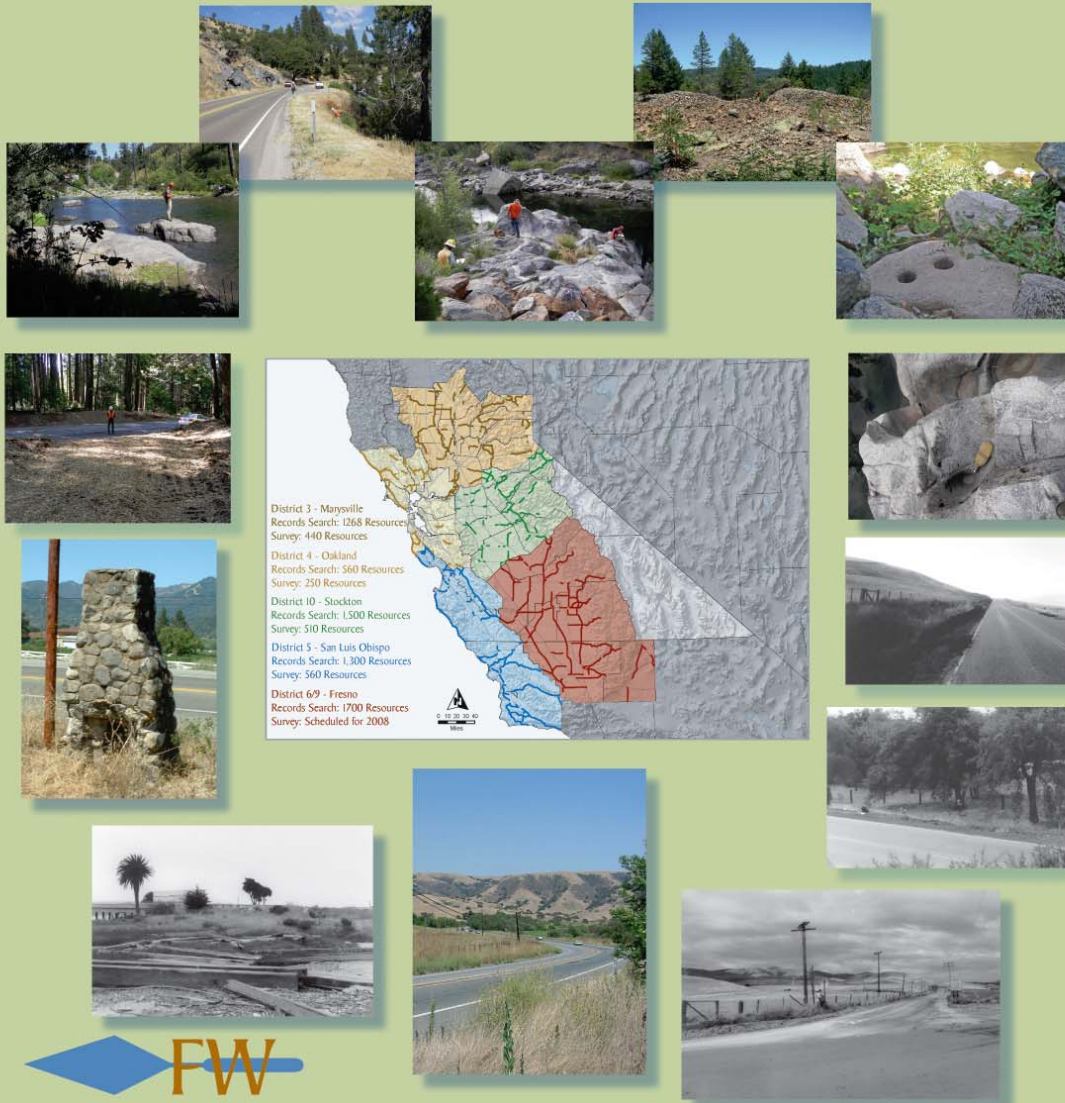
Visions from the
Central California Transportation
Enhancement Activities Inventory
Architectural Resources in Central California
Caltrans Districts 3, 4, 5, 6, 9, 10



FAR WESTERN
ANTHROPOLOGICAL RESEARCH GROUP, INC.

Visions From The Central California Transportation Enhancement Activities Inventory

Prehistoric and Historic-era Resources in
Central California Caltrans District
3, 4, 5, 6, 9, 10



FAR WESTERN
ANTHROPOLOGICAL RESEARCH GROUP, INC.

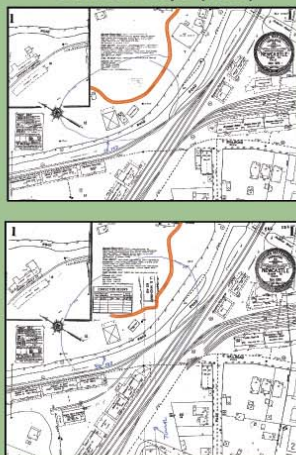
Transportation Enhancement Activities (TEA) Program

List of Qualifying TEA Activities Provided in 23 USC 101(a)(35)

Includes Archaeological Planning and Research

Following the Paper Trail

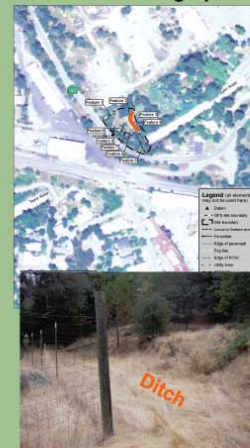
Sanborn Maps (1925)



Caltrans As-Built Maps (1932 and 1936)

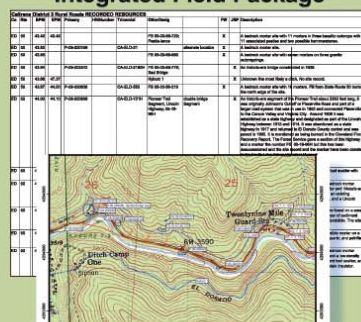


Aerial Photograph

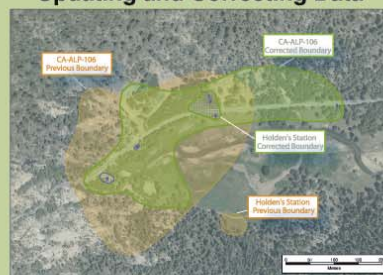


Present-day Resources

Integrated Field Package



Updating and Correcting Data



The Caltrans Rural Roads Inventories were Envisioned and Initiated by Senior Environmental Planner Margaret Buss.

They have produced an exhaustive and expandable database of cultural resources within the Caltrans road right-of-way.

Far Western would like to thank Margaret Buss, Valerie Levelett, Christina Hibbert, Jennifer Darcangelo, Scott Williams, Sarah Gasner, and Kim Tanksley for their hard work to continually improve the process.

